

STRONGMATE

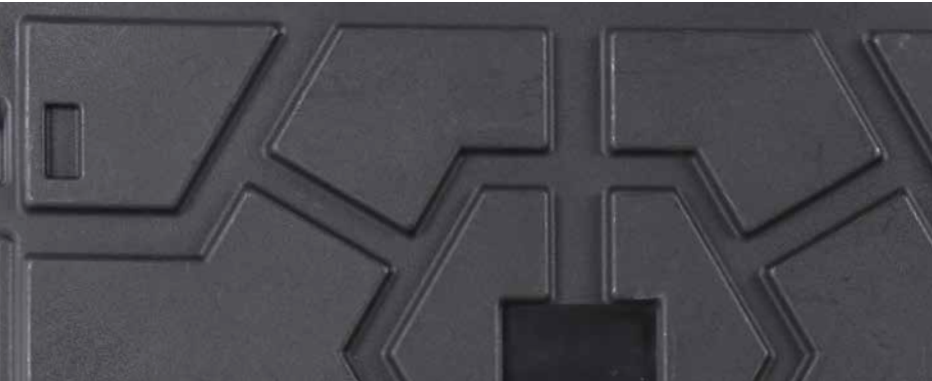


Space for big things



HEPCO & BECKER

STRONGMATE



The new Strongmate product family means: great design and high-quality equipment, combined with a high load capacity. Strongmate guarantees comfort and protection during storage and transportation of heavy and large professional tools and technical equipment. Strong and professional wheels, locks, handles and other components, perfectly integrated, ensure comfort and safety during use. Strongmate boxes are firmly stackable on the surface due to the special structure.



Layout

According to your wishes, we offer a variety of optional interior accessories such as milled or stamped foams and plastic partitions. Can be combined with many products of the Hepco & Becker series.

STRONGMATE



Internal Fixing

Solutions with the variable lashing system (optional), securing points predrilled inside the Strongmate 2001/2002 and 2003 can be used to secure even heavy objects - preventing damage during transport.

Connecting systems

The stackable boxes can be connected to two or more units using the optional special hook and loop system.

Corporate Design

Various colors and even color combinations, as well as the possibility to attach customized logos, allow an individualization

STRONGMATE 2001



Equipment:
Fastening kit inside, consisting of 2 straps, 4 fastening hooks and screws



On demand:
Fixing kit outside consisting of 2 lashing straps with 2 fastening hooks

Very robust and heavy-duty double-walled stacking transport box with HDPE. Trolley function for bulky or large-format tools. Lid double-walled. Interior smooth-walled with divider inlets. Boxes outside with fixing eyelets. High-quality butterfly locks and transport handles. Color: standard black. Other colors available on order.

STRONGMATE 2001



Integrated handle
High-quality butterfly locks and folding handles



Stackable



On demand:
Equipment with partition system
8 holes for mounting kit inside



Cover gasket (self-assembly) attached



On demand:
Equipment with foam

Strongmate 2001 Item-no. 00 2001 8019



ITEM	ITEM-NO
Strongmate 2001	00 2001 8019
EQUIPMENT	
Fastening kit inside	00 2020 8019
Fastening kit outside	on request
Partition wall system	on request
Foam inserts	on request

MM Dimensions outside
1000 x 400 x 470

MM Dimensions inside
910 x 300 x 370

KG Weight
14,5

Material
HDPE

Usable volume
100 litres

Load capacity
up to 60kg

Custom
4202 12 50
Origin: Spain

STRONGMATE 2002



Equipment:
Fastening kit inside, consisting of 2 straps, 4 fastening hooks and screws



On demand:
Fixing kit outside consisting of 2 lashing straps with 2 fastening hooks

Very robust and heavy-duty single-walled HDPE stacking transport box. Trolley function for bulky or large-format tools. Lid double-walled. Interior smooth-walled with divider inlets. Boxes outside with fixing eyelets. High-quality butterfly locks and transport handles. Color: standard black. Other colors available on order.

STRONGMATE 2002



High-quality folding handles



Integrated rollers



Stackable



High-quality butterfly locks
Possibility for lock attachment



Cover gasket (self-assembly) attached



On request: Partition system
40 holes for max. 20 fastening hooks
(Fastening kit inside)

Strongmate 2002 Item-no. 00 2002 8019



ITEM

ITEM-NO

Strongmate 2002

00 2002 8019

EQUIPMENT

Fastening kit inside

00 2020 8019

Fastening kit outside

on request

Partition wall system

on request

Foam inserts


on request


MM Dimensions outside
880 x 590 x 320


MM Dimensions inside
790 x 490 x 220

KG Weight
13,5

 Material
HDPE

 Usable volume
83 litres

 Load capacity
up to 60kg

 Custom
4202 12 50
Origin: Spain

STRONGMATE 2003



Equipment:
Fastening kit inside, consisting of 2 straps, 4 fastening hooks and screws



On demand:
Fixing kit outside consisting of 2 lashing straps with 2 fastening hooks

Very robust and heavy-duty single-walled HDPE stacking transport box. Trolley function for bulky or large-format tools. Lid double-walled. Interior smooth-walled with divider inlets. Boxes outside with fixing eyelets. High-quality butterfly locks and transport handles. Color: standard black. Other colors available on order.

STRONGMATE 2003



Stackable
Fastening set as accessory



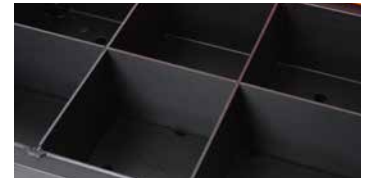
High quality rubber rollers
Plastic cams as abrasion protection at stair use



High-quality folding handles



Cover gasket (self-assembly) attached



On request: Partition system
40 holes for max. 20 fastening hooks
(Fastening kit inside)

Strongmate 2003 Item-no. 00 2003 8019



ITEM

ITEM-NO

Strongmate 2003

00 2003 8019

EQUIPMENT

Fastening kit inside

00 2020 8019

Fastening kit outside

on request

Partition wall system

on request

Foam inserts

on request


MM Dimensions outside
880 x 590 x 445


MM Dimensions inside
790 x 490 x 350

KG Weight
15,5

 Material
HDPE

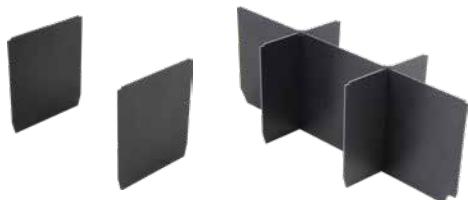
 Usable volume
131 litres

 Load capacity
up to 60kg

 Custom
4202 12 50
Origin: Spain

STRONGMATE ACCESSORIES

Strongmate 2001



Partition system
oo 2024 8019

Partition system
oo 2025 8019

Strongmate 2002



Partition system
oo 2026 8019

Strongmate 2003



Partition system
oo 2027 8019

Strongmate 2001/2002/2003



FASTENING KIT OUTSIDE
Set of 2 straps
with metal hook and strap lock

Item-no. oo 2023 2230
2x 1.010 / 2x 1.220mm
Suitable for:
2 piece 2001, 2 piece 2002,
1 piece 2002 + 1 piece 2003

Item-no. oo 2023 2680
2x 1.010 / 2x 1.670mm
Suitable for:
3 piece 2002, 2 piece 2003

Item-no. oo 2023 3140
2x 1.470 / 2x 1.670mm
Suitable for:
3 piece 2001, 3 piece 2003



Example for Kit oo 2023 2230
1 piece 2002 + 1 piece 2003



FASTENING KIT INSIDE
Item no. oo 2020 8019
consisting of 2 straps,
4 fastening hooks and screws

HEPCO & BECKER GMBH
An der Steinmauer 6
D-66955 Pirmasens
Fax: +49 6331 1453 220
www.hepco-becker.de

**Orders, questions,
wishes and suggestions:
Tel: +49 6331 1453 200
info@hepco-becker.de**

We do not assume any liability for printing errors. The technical specifications, scope of delivery, appearance and dimensions correspond to the knowledge available at the time of printing. 05/2019



HEPCO & BECKER